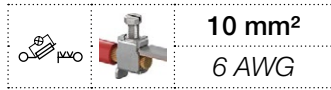


# ZS10-SF-R screw clamp terminal blocks

## For 6.3x32 fuses - with blown fuse indicator - 8 mm 0.315 in spacing



### Description

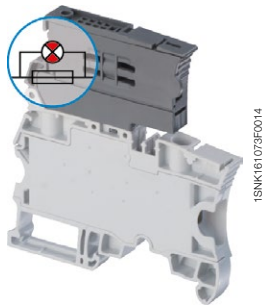
- Protect your circuits with 6.3x32 (1/4 x 1 1/4 in) fuse terminal blocks compliant with IEC 60947-7-3 standard (fuse not supplied with the terminal blocks),
- Quickly identify the defective circuit thanks to the blown fuse indicator (with leakage current < 0.5 mA).

### Ordering details

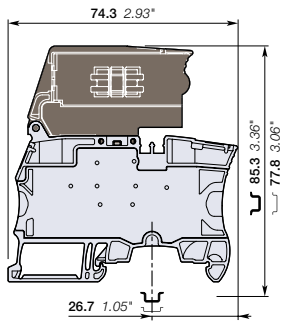
| Description  | Color           | Type       | Order code      | Pkg qty | Weight (1 pce) g |
|--|-----------------|------------|-----------------|---------|------------------|
| Fuse With blown fuse indicator 115 ... 250 V AC / DC | Grey, dark grey | ZS10-SF-R3 | 1SNK508422R0000 | 50      | 30.50            |
| Fuse With blown fuse indicator 24 ... 110 V AC / DC  |                 | ZS10-SF-R1 | 1SNK508421R0000 | 50      | 30.50            |

### Main technical data

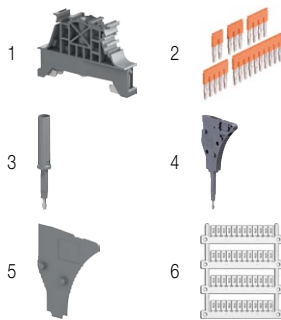
| Connecting capacity                        | IEC   | UL - CSA  | Mounting instructions                           |
|--|---|---|---|
| <b>1 conductor per clamp</b>               | Rigid - Solid / Stranded<br>Flexible<br>with non insulated ferrule<br>with insulated ferrule<br>Gauge | 0.5 ... 10 mm <sup>2</sup><br>0.5 ... 10 mm <sup>2</sup><br>0.5 ... 4 mm <sup>2</sup><br>0.5 ... 6 mm <sup>2</sup><br>A5-B5 | 24 ... 6 AWG<br>24 ... 8 AWG<br>24 ... 10 AWG   |
| <b>2 conductors per clamp</b>              | Rigid - Solid / Stranded<br>Flexible<br>with twin ferrule   | 0.5 ... 4 mm <sup>2</sup><br>0.5 ... 4 mm <sup>2</sup><br>0.5 ... 4 mm <sup>2</sup>   | 20 ... 12 AWG<br>20 ... 12 AWG<br>20 ... 12 AWG |
| <b>Rated current / Rated cross section</b> |   | 10 A / 10 mm <sup>2</sup>   | 22 A / 6 AWG                                    |
| <b>Rated voltage</b>                       |   | 630 V   | 600 V   |
| <b>Impulse withstand voltage</b>           |   | 6000 V  |   |
| <b>Protection</b>                          |   | IP20  | NEMA 1  |
|  |   |   | <b>Torque</b>                                   |
|  |   |   | 1.3 Nm ± 0.3<br>11.5 lb.in ± 2.65               |



ZS10-SF-R



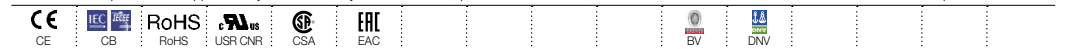
8 mm 0.315 in spacing



Mount your fuse safely without touching any active part: put the fuse into the hooks of the fuse holder shutter; at the closing of the shutter, the fuse is perfectly in place in the fuse holder.

| Separate arrangement | Assembly composed of 1 fuse terminal block in between non fuse terminal blocks | Overload and short-circuit protection | 4 W   |
|----------------------|--|---------------------------------------|-------|
|                      |  | Exclusive short-circuit protection    | 4 W   |
| Compound arrangement | Assembly composed of 5 fuse terminal blocks                                    | Overload and short-circuit protection | 2.5 W |
|                      |  | Exclusive short-circuit protection    | 2.5 W |

The connecting capacity data for one Rigid - Solid / Stranded - Flexible conductor (when applicable) is a mandatory information required by IEC, UL and CSA standards (Copper conductors). All other data are provided as supplementary information only. For more details, please consult our CB, UL or CSA certificates and technical datasheet available on <http://www.ABB.com>



### Accessories

| Description                     | Color     | Type                             | Order code                    | Pkg qty         | Weight (1 pce) g |       |
|---------------------------------|-----------|----------------------------------|-------------------------------|-----------------|------------------|-------|
| <b>1 End stops</b>              | Dark grey | BAM4                             | 1SNK900001R0000               | 50              | 14.00            |       |
| <b>2 Jumper bars</b>            | Orange    | 2 poles 57 A (IEC)               | JB8-2                         | 1SNK908302R0000 | 50               | 2.70  |
|                                 |           | 3 poles 57 A (IEC)               | JB8-3                         | 1SNK908303R0000 | 50               | 4.10  |
|                                 |           | 4 poles 57 A (IEC)               | JB8-4                         | 1SNK908304R0000 | 50               | 5.60  |
|                                 |           | 5 poles 57 A (IEC)               | JB8-5                         | 1SNK908305R0000 | 40               | 7.00  |
|                                 |           | 10 poles 57 A (IEC)              | JB8-10                        | 1SNK908310R0000 | 20               | 14.20 |
| <b>3 Test adapters</b>          | Dark grey | For test plugs DIA 2 mm 0.079 in | TP2                           | 1SNK900203R0000 | 20               | 1.70  |
|                                 |           | For test plugs DIA 4 mm 0.157 in | TP4                           | 1SNK900205R0000 | 20               | 2.40  |
| <b>4 Test connectors</b>        | Dark grey | 5.2 mm 0.205 in spacing          | TC5                           | 1SNK900200R0000 | 10               | 5.20  |
|                                 |           | End module, 5.2 mm 0.205 in      | TC5-R1                        | 1SNK900201R0000 | 10               | 5.20  |
| <b>5 Spacers</b>                | Dark grey | ES-TC8                           | 1SNK900104R0000               | 10              | 1.40             |       |
| <b>6 Terminal block markers</b> | White     | Blank marker                     | MG-CPM 13 41791               | 1SNB041791R0612 | 1680             | 0.27  |
|                                 |           | Blank card                       | MC812                         | 1SNK160000R0000 | 22               | 10.00 |
|                                 |           |                                  | MC812PA                       | 1SNK169999R0000 | 20               | 14.00 |
|                                 |           |                                  | Universal wire markers holder | UMH             | 1SNK900611R0000  | 10    |

Complete list of accessories is indicated in the terminal block datasheet including end stops. Some accessories such as jumper bars may modify the terminal block's ratings: Complete information available in the accessories section of the catalog.

All the technical data for UL/CSA standard and dimensions in inches are in italic. Technical data valid for copper conductors only.